



CAPABILITY STATEMENT

MANAGING DIRECTORS

ANDREW WALLACE | 0417 123 067

LEE STEVENSON | 0420 432 274

ABN | 9648 1291 023

Unit 9 2/22 Kirkham Rd, Keysborough
+61 3 9874 2488

otd@ontimeddevelopments.com

www.ontimeddevelopments.com

All material within this document is confidential and may not be distributed or disclosed to any other party without written consent from On Time Developments Pty Ltd.

Clients



Business Overview

On Time Developments is a leading commercial aquatic tiling contractor with a combined 30 years' experience in the field.

We have established a strong reputation for quality workmanship, professionalism, value- for-money service and our ability to work in co-operation with other trades to complete projects on time and within budget.

We have established a strong reputation for quality workmanship, professionalism, value- for-money service and our ability to work in co-operation with other trades to complete projects on time and within budget. Our expert team of craftsman work to the highest of standards and are focused on meeting or exceeding our clients' requirements, no matter how large or small the project. All team members have a minimum Cert III in Wall & Floor Tiling. We are skilled tradesmen who take great pride in our work.

With our vast industry experience, we fully understand that, with the high frequency of use/ wear and tear general aquatic facilities receive, the longevity of our work is vital. We only use fit-for-purpose materials, tiling to the exact specifications required, without exception.

The OTD team has successfully completed a wide range of projects in and around the Melbourne metropolitan area, travelling outside the Melbourne area on request. This includes many small projects, from removing and replacing the grate system around Ivanhoe Aquatic Centre's lap pool, to the large scale redevelopment of Monash University's Doug Ellis Pool, where the entire 50m pool internal shell has been completely stripped back and re-tiled, including structural changes to the pool itself.

Thanks to our broad range of commercial building and tiling experience and industry knowledge, we view each and every project on its individual needs and requirements. We proactively partner with our clients, guiding them through all stages from necessity to design and completion.

Every OTD project is managed by qualified supervisors and tradespersons, with safety and environmental protection as our highest priorities.

On the following pages, we outline our experience, demonstrating our team's skill levels through previously completed projects, to ensure a better understanding of our abilities and the superior level of service we provide.

We're proud of our reputation and our ability to consistently deliver the highest level of service to our valued clients.

Andrew Wallace

Lee Stevenson

Our Services

Our main services include:

- Aquatic Tiling
- Aquatic Centre finishes
- Demolition
- Wet deck and grating
- General tiling – all areas
- Waterproofing



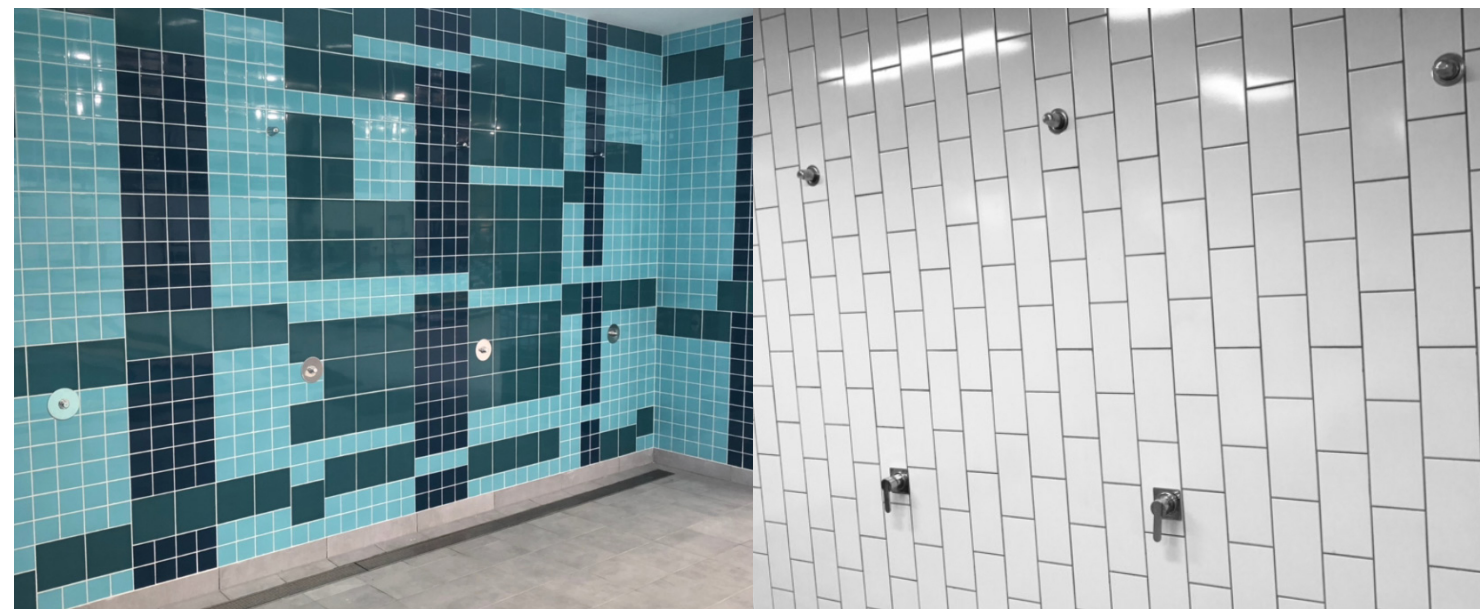
Aquatic Tiling at Collingwood Leisure Centre



Wet Deck & Grating



Demolition



General Tiling

OTD has also completed many large general tiling projects, both inside and outside of the aquatics industry. We have serviced clients in the hospitality, auto and medical industries. We are able to supply tiles and materials which meet any installation requirements.

We recently completed project at Westbourne Grammar School, consisting of several new amenities and a concourse - fully screeded, waterproofed and tiled.

Other services provided include:

- High pressure blasting and cleaning
- Wet deck painting
- Consulting
- Design
- Underwater repairs
- Epoxy flooring
- Concrete and concrete repair
- Earth bonding
- Pool Painting and Re-painting
- Structural building; stairs/ramps
- Stainless steel fittings and extras
- Tile repair
- Carpentry
- Scum gutter painting

Our Capabilities

Following is a selection of our completed projects, with many more examples available on request.

PROJECT

Collingwood Leisure Pool Refurbishment

Client: Yarra City Council

Issue: After problems with de-laminating tiles, Yarra City Council decided to completely refurbish the existing pool, demolishing all the interior finishes and replacing them to avoid any further damage

Challenges: Short timeframe, expanded scope of works with new staircase in the toddler pool added

Solutions: We structured and managed our time well, working effectively in collaboration with other trades

Outcomes: Project completed and delivered on time and within budget, Council extremely happy with the finished result

OTD works at
Collingwood
Leisure
Centre



PROJECT

Oak Park Aquatic Centre – new fitout installation of 50m pool, learn to swim pool, Splash Park and general amenities

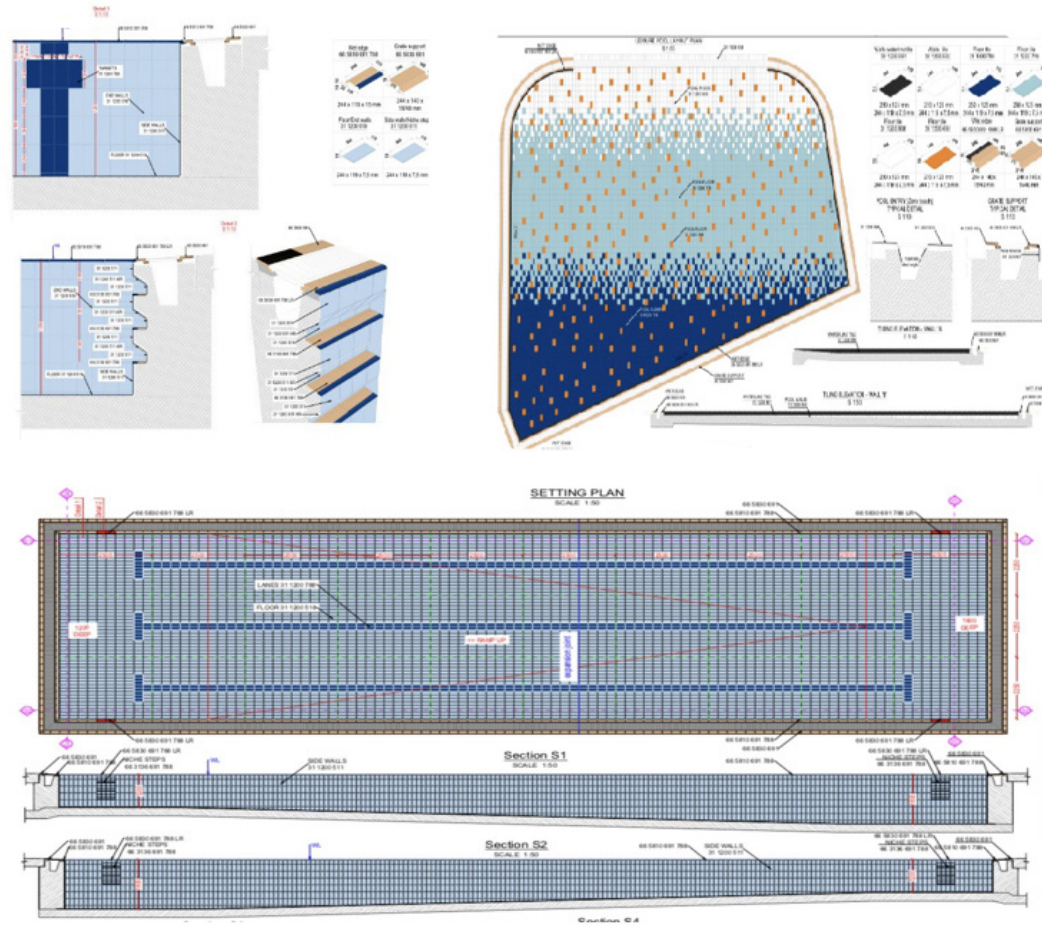
Client: Hutchinson Builders for the Moreland City Council

Challenges: Working on site with other trades

Solutions: We played a vital role in the timely completion of this project by proactively collaborating with the builder regarding progress stages and co-ordination of the various trades

Outcomes: Project delivered on time and in accordance with the scheduled opening date. Our clients were very happy with our work on this state-of-the-art project, and they have experienced an unprecedented number of visitors since re-opening.

Shop Drawings



Insurance / OH&S Information



Public Liability Insurance

Insurer Berkley Insurance
Insured sum \$20 million



Product Liability Insurance

Insurer Berkley Insurance
Insured sum \$20 million



Indemnity Insurance

Insurer Solution One Pty Ltd
Insured sum \$4 million



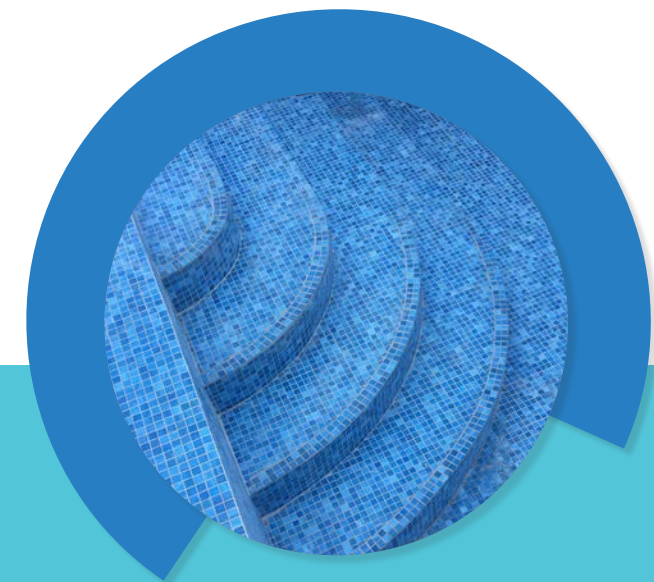
Work Cover Insurance

Employer No. 13437288
Insured sum Gallagher & Bassett



OH&S

- All OH&S documentation and SWMS available on engagement
- All current and valid as of June 2021 all recognised throughout the Victorian Health and Safety Management Systems Framework





As On Time Developments is growing, so is our ability to complete all different types of works. If you are in search of someone to complete a scope of works that is not on our list of services provided, we will be able to source qualified skill and labour to complete the project.

We have been able to broaden our capability through gaining knowledge and experience during many of the major projects completed and see no task as unachievable.

Please feel free to contact us to discuss your tiling requirements and we will be happy to brief you further on our professional services.

ONTIMEDEVELOPMENTS

Unit 9 2/22 Kirkham Rd, Keysborough
+61 3 9874 2488
otd@ontimedependments.com
www.ontimedependments.com